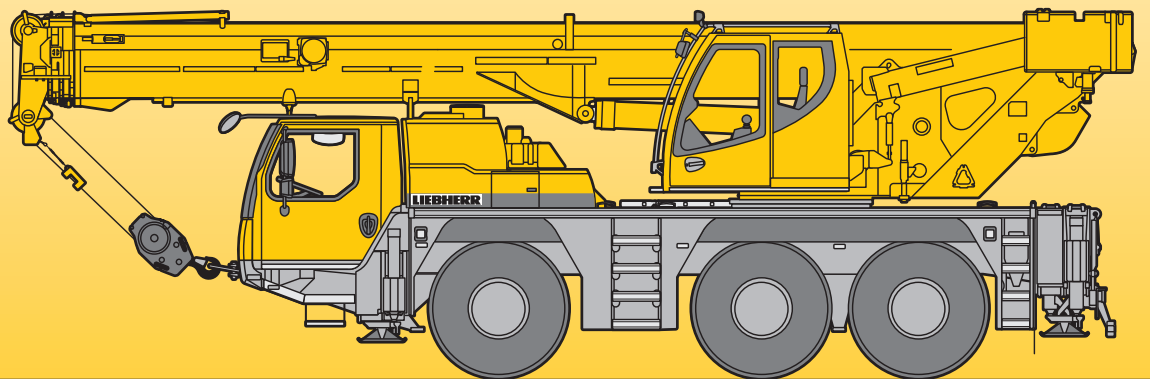


# Mobile Crane Grue mobile

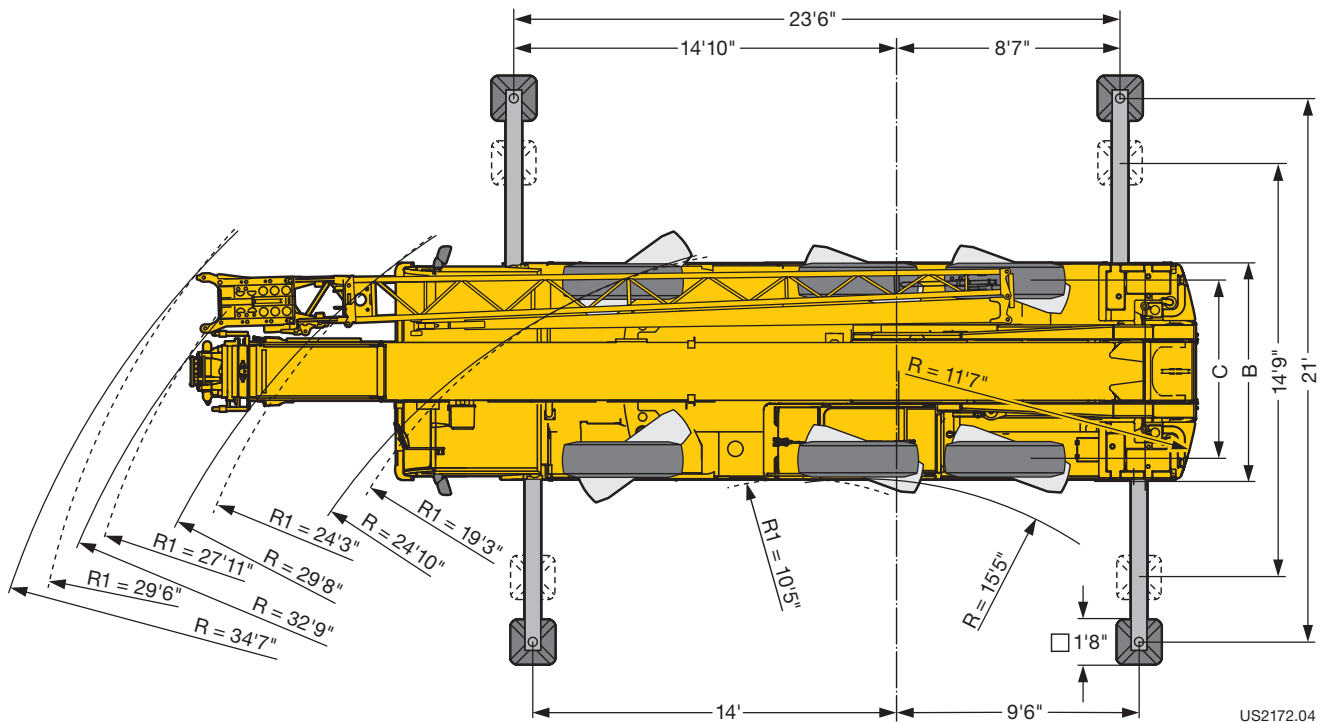
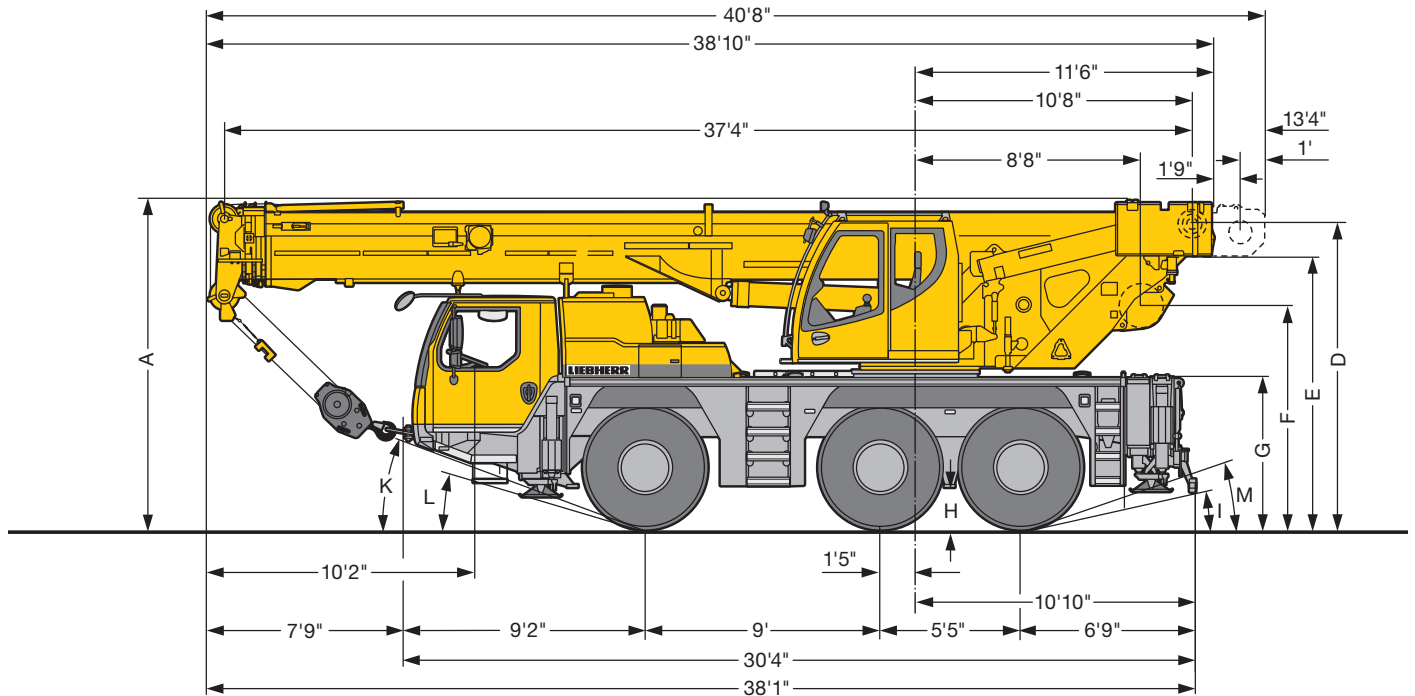
# LTM 1050-3.1

## Technical Data Caractéristiques techniques



# LIEBHERR

# Dimensions Encombrement



US2172.04

R<sub>i</sub> = All-wheel steering - Direction toutes roues

	Dimensions · Encombrement													
	A	A 0'4" *	B	C	D	E	F	G	H	I	K	L	M	
445/95 R 25 (16.00 R 25)	12'7"	12'3"	8'4"	6'11"	11'8"	10'5"	8'6"	5'9"	1'5"	12°	21°	15°	19°	
525/80 R 25 (20.5 R 25)	12'7"	12'3"	8'10"	7'1"	11'8"	10'5"	8'6"	5'9"	1'5"	12°	21°	15°	19°	

\* lowered · abaissé

## Weights Poids



Axle Essieu lbs	1	2	3	Total weight lbs Poids total lbs
	26400	26400	26400	79200 <sup>1)</sup>

<sup>1)</sup> with 15400 lbs counterweight / avec contrepoids 15400 lbs



Load kips Forces de levage kips	No. of sheaves Poulies	No. of lines Brins	Weight lbs Poids lbs
110.2	5	10	882
66.5	3	7	617
29.3	1	3	430
9.9	–	1	165

## Working speeds Vitesses



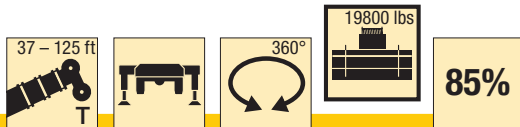
		1	2	3	4	5	6	7	8	9	10	11	12	R 1	R 2	
445/95 R 25 (16.00 R 25)	mph	1.5 – 3.8	4.9	6.3	8.1	10.3	13.2	17.5	22.4	28.9	37.1	47.1	50	1.6 – 4	5.3	51.6 %
525/80 R 25 (20.5 R 25)		0.5 – 1.2	1.6	2.1	2.6	–	–	–	–	–	–	–	–	0.5 – 1.3	1.7	61.7 %



Drive Mécanismes	infinitely variable en continu	Rope diameter / Rope length Diamètre du câble / Longueur du câble	Max. single line pull Effort au brin maxi.
	0 – 394 ft/min single line ft/min au brin simple	0.59" / 591'	10125 lbs
	0 – 394 ft/min single line ft/min au brin simple	0.59" / 591'	10125 lbs
	0 – 1.9 rpm		
	approx. 47 seconds to reach 82° boom angle env. 47 s jusqu'à 82°		
	approx. 80 seconds for boom extension from 37 ft – 125 ft env. 80 s pour passer de 37 ft – 125 ft		

# Lifting capacities Forces de levage

T



ft	37 ft		55 ft		72 ft		90 ft		107 ft		117 ft		125 ft		ft
	*			**		**		**		**		**		**	
10	110.2	92.6	54.8	44.5	54.2	42.2	37.5	34.9							10
11	104.7	90	56.2	44.5	54.7	42	37.3	34.7							11
12	97.4	85.4	57.4	44.5	55.2	41.9	36.9	34.5							12
13	91.7	81	58.4	44.5	55.4	41.7	36.6	34.3	25.4	23.5					13
14	86.2	76.8	59.2	44.5	55.1	41.6	36.2	34.1	25.3	23.3					14
15	81.3	72.6	60.1	44.5	54.4	41.5	35.8	33.9	25.2	23.1					15
16	76.9	68.9	61	44.5	53.7	41.4	35.4	33.7	25	22.8	21	15.3			16
17	73.1	65.5	62	44.5	52.8	41.4	35	33.5	24.8	22.6	20.9	15.1	16.8	9.3	17
18	69.4	62.1	61.4	44.5	51.8	41.3	34.5	33.3	24.7	22.4	20.9	14.9	16.7	8.6	18
19	66.2	58.7	59.3	44.5	50.9	41.2	34	33.1	24.4	22.2	20.7	14.7	16.6	8.3	19
20	63	55.4	56.3	44.5	49.7	41.2	33.5	32.9	24.2	22	20.6	14.5	16.5	8.1	20
22	57.5	49.9	50.6	44.5	47.4	41.1	32.4	32.3	23.8	21.6	20.4	14.1	16.1	7.8	22
24	49.8	44.7	45.4	44.2	44.8	41	31.1	31.1	23.2	21.2	20	13.8	15.8	7.6	24
26	39.7	39.7	41.2	41.2	41.4	40.5	29.8	29.8	22.6	20.8	19.7	13.4	15.4	7.4	26
28			36.7	36.7	37	37	28.5	28.5	22	20.5	19.2	13.1	15.1	7.1	28
30			33.4	33.4	33.6	33.6	27.2	27.2	21.3	20.2	18.6	12.8	14.8	6.9	30
32			30.2	30.2	30.7	30.7	26	26	20.6	19.9	18	12.5	14.4	6.7	32
34			27.4	27.4	27.6	27.6	24.9	24.9	19.8	18.8	17.5	12.3	14.1	6.5	34
36			25.2	25.2	25.4	25.4	23.8	23.8	19	17.9	17	12	13.8	6.3	36
38			23.3	23.3	23.5	23.5	22.9	22.9	18.1	17.7	16.5	11.7	13.5	6.1	38
40			21.6	21.6	21.7	21.7	21.8	21.8	17.4	17.2	16	11.5	13.2	5.9	40
45					17.7	17.7	17.8	17.8	15.9	15.9	14.9	10.9	12.5	5.5	45
50					15.1	15.1	15.2	15.2	14.8	14.8	13.9	10.5	11.8	5.2	50
55					12.9	12.9	13.2	13.2	13.2	13.2	12.9	9.8	11.1	4.7	55
60					11.1	11.1	11.3	11.3	11.5	11.5	11.5	8.5	10.6	3.7	60
65							9.5	9.5	9.9	9.9	9.5	8.1	9.6	2.9	65
70							8.4	8.4	8.5	8.5	8.4	7.5	8.5	2.3	70
75							7.5	7.5	7.6	7.6	7.5	6.2	7.6		75
80									6.7	6.7	6.7	5.1	6.7		80
85									5.9	5.9	6	4.1	6		85
90									5.2	5.2	5.2	3.3	5.3		90
95									4.6	4.6	4.6	2.6	4.7		95
100											4.1	2	4.1		100
105											3.6		3.6		105
110													3.1		110

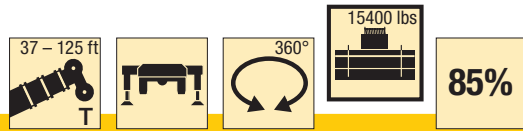
\* over rear · sur arrière

\*\* telescopic loads · capacités de levage en télescopage

t\_185\_00011\_00\_001 / t\_185\_00111\_00\_001

# Lifting capacities Forces de levage

T



ft	37 ft		55 ft		72 ft		90 ft		107 ft		117 ft		125 ft		ft
		**		**		**		**		**		**		**	
10	92.6	54.8	44.5	54.2	42.2	37.5	34.9							10	
11	89.8	56.2	44.5	54.7	42	37.3	34.7							11	
12	85.1	57.4	44.5	55.2	41.9	36.9	34.5							12	
13	80.5	58.4	44.5	55.4	41.7	36.6	34.3	25.4	23.5					13	
14	76	59.2	44.5	55.1	41.6	36.2	34.1	25.3	23.3					14	
15	71.8	60.1	44.5	54.4	41.5	35.8	33.9	25.2	23.1					15	
16	67.9	61	44.5	53.7	41.4	35.4	33.7	25	22.8	21	15.3			16	
17	64.2	62	44.5	52.8	41.4	35	33.5	24.8	22.6	20.9	15.1	16.8	9.3	17	
18	60.5	60.8	44.5	51.8	41.3	34.5	33.3	24.7	22.4	20.9	14.9	16.7	8.6	18	
19	57.1	57.5	44.5	50.9	41.2	34	33.1	24.4	22.2	20.7	14.7	16.6	8.3	19	
20	53.8	54.5	44.5	49.7	41.2	33.5	32.9	24.2	22	20.6	14.5	16.5	8.1	20	
22	47.9	48.5	44.5	47	41.1	32.4	32.3	23.8	21.6	20.4	14.1	16.1	7.8	22	
24	42.7	43.6	43.6	43.5	40.7	31.1	31.1	23.2	21.2	20	13.8	15.8	7.6	24	
26	37.4	38.6	38.6	39	39	29.8	29.8	22.6	20.8	19.7	13.4	15.4	7.4	26	
28		34.5	34.5	34.8	34.8	28.5	28.5	22	20.5	19.2	13.1	15.1	7.1	28	
30		31.3	31.3	31.5	31.5	27.2	27.2	21.3	20.2	18.6	12.8	14.8	6.9	30	
32		28.1	28.1	28	28	26	26	20.6	19.9	18	12.5	14.4	6.7	32	
34		25.5	25.5	25.6	25.6	24.9	24.9	19.8	18.8	17.5	12.3	14.1	6.5	34	
36		23.3	23.3	23.6	23.6	23.3	23.3	19	17.9	17	12	13.8	6.3	36	
38		21.2	21.2	21.6	21.6	21.7	21.7	18.1	17.7	16.5	11.7	13.5	6.1	38	
40		19.3	19.3	19.4	19.4	20	20	17.4	17.2	16	11.5	13.2	5.9	40	
45				16.2	16.2	16.4	16.4	15.9	15.9	14.9	10.9	12.5	5.5	45	
50				13.5	13.5	13.8	13.8	14	14	13.6	10.5	11.8	5.2	50	
55				11.4	11.4	11.7	11.7	11.8	11.8	11.8	9.8	11.1	4.7	55	
60				9.8	9.8	9.8	9.8	9.9	9.9	10	8.5	9.9	3.7	60	
65						8.5	8.5	8.6	8.6	8.5	8.1	8.5	2.9	65	
70						7.4	7.4	7.5	7.5	7.4	7.4	7.4	2.3	70	
75						6.4	6.4	6.6	6.6	6.5	6.2	6.5		75	
80								5.7	5.7	5.7	5.1	5.7		80	
85								4.9	4.9	5	4.1	5		85	
90								4.3	4.3	4.3	3.3	4.4		90	
95								3.7	3.7	3.7	2.6	3.8		95	
100										3.2	2	3.3		100	
105										2.8		2.8		105	
110												2.4		110	

\*\* telescopic loads · capacités de levage en télescopage

t\_185\_00113\_00\_001

# Lifting capacities Forces de levage

T

37 - 125 ft

12800 lbs

85%

ft	37 ft		55 ft		72 ft		90 ft		107 ft		117 ft		125 ft		ft
		**		**		**		**		**		**		**	
10	92.6	54.8	44.5	54.2	42.2	37.5	34.9							10	
11	89.7	56.2	44.5	54.7	42	37.3	34.7							11	
12	85	57.4	44.5	55.2	41.9	36.9	34.5							12	
13	80.2	58.4	44.5	55.4	41.7	36.6	34.3	25.4	23.5					13	
14	75.6	59.2	44.5	55.1	41.6	36.2	34.1	25.3	23.3					14	
15	71.4	60.1	44.5	54.4	41.5	35.8	33.9	25.2	23.1					15	
16	67.4	61	44.5	53.7	41.4	35.4	33.7	25	22.8	21	15.3			16	
17	63.5	61.8	44.5	52.8	41.4	35	33.5	24.8	22.6	20.9	15.1	16.8	9.3	17	
18	59.7	60.4	44.5	51.8	41.3	34.5	33.3	24.7	22.4	20.9	14.9	16.7	8.6	18	
19	56.3	56.9	44.5	50.9	41.2	34	33.1	24.4	22.2	20.7	14.7	16.6	8.3	19	
20	52.9	53.7	44.5	49.7	41.2	33.5	32.9	24.2	22	20.6	14.5	16.5	8.1	20	
22	47	47.7	44.5	46.4	41.1	32.4	32.3	23.8	21.6	20.4	14.1	16.1	7.8	22	
24	41.4	42.1	42.1	41.5	40.2	31.1	31.1	23.2	21.2	20	13.8	15.8	7.6	24	
26	36.3	37.2	37.2	37	37	29.8	29.8	22.6	20.8	19.7	13.4	15.4	7.4	26	
28		33.3	33.3	33.2	33.2	28.5	28.5	22	20.5	19.2	13.1	15.1	7.1	28	
30		29.7	29.7	30	30	27.2	27.2	21.3	20.2	18.6	12.8	14.8	6.9	30	
32		26.9	26.9	27	27	25.7	25.7	20.6	19.9	18	12.5	14.4	6.7	32	
34		24.4	24.4	24.7	24.7	23.9	23.9	19.8	18.8	17.5	12.3	14.1	6.5	34	
36		22	22	22.4	22.4	22.1	22.1	19	17.9	17	12	13.8	6.3	36	
38		20	20	20.4	20.4	20.4	20.4	18.1	17.7	16.5	11.7	13.5	6.1	38	
40		18.3	18.3	18.6	18.6	18.8	18.8	17.4	17.2	16	11.5	13.2	5.9	40	
45				15.3	15.3	15.5	15.5	15.3	15.3	14.7	10.9	12.5	5.5	45	
50				12.7	12.7	12.9	12.9	13.1	13.1	12.8	10.5	11.8	5.2	50	
55				10.7	10.7	10.9	10.9	11.1	11.1	11	9.8	10.9	4.7	55	
60				9.1	9.1	9.1	9.1	9.3	9.3	9.2	8.5	9.2	3.7	60	
65						7.9	7.9	8	8	7.9	7.9	7.9	2.9	65	
70						6.9	6.9	6.9	6.9	6.8	6.8	6.9	2.3	70	
75						5.9	5.9	6	6	6	6	6		75	
80								5.2	5.2	5.2	5	5.2		80	
85								4.5	4.5	4.5	4.1	4.6		85	
90								3.9	3.9	3.9	3.3	4		90	
95								3.3	3.3	3.3	2.6	3.4		95	
100										2.8	2	2.9		100	
105										2.4		2.5		105	
110												2.1		110	

\*\* telescopic loads · capacités de levage en télescopage

t\_185\_00116\_00\_001

37 - 55 ft

19800 lbs  
15400 lbs  
12800 lbs

85%

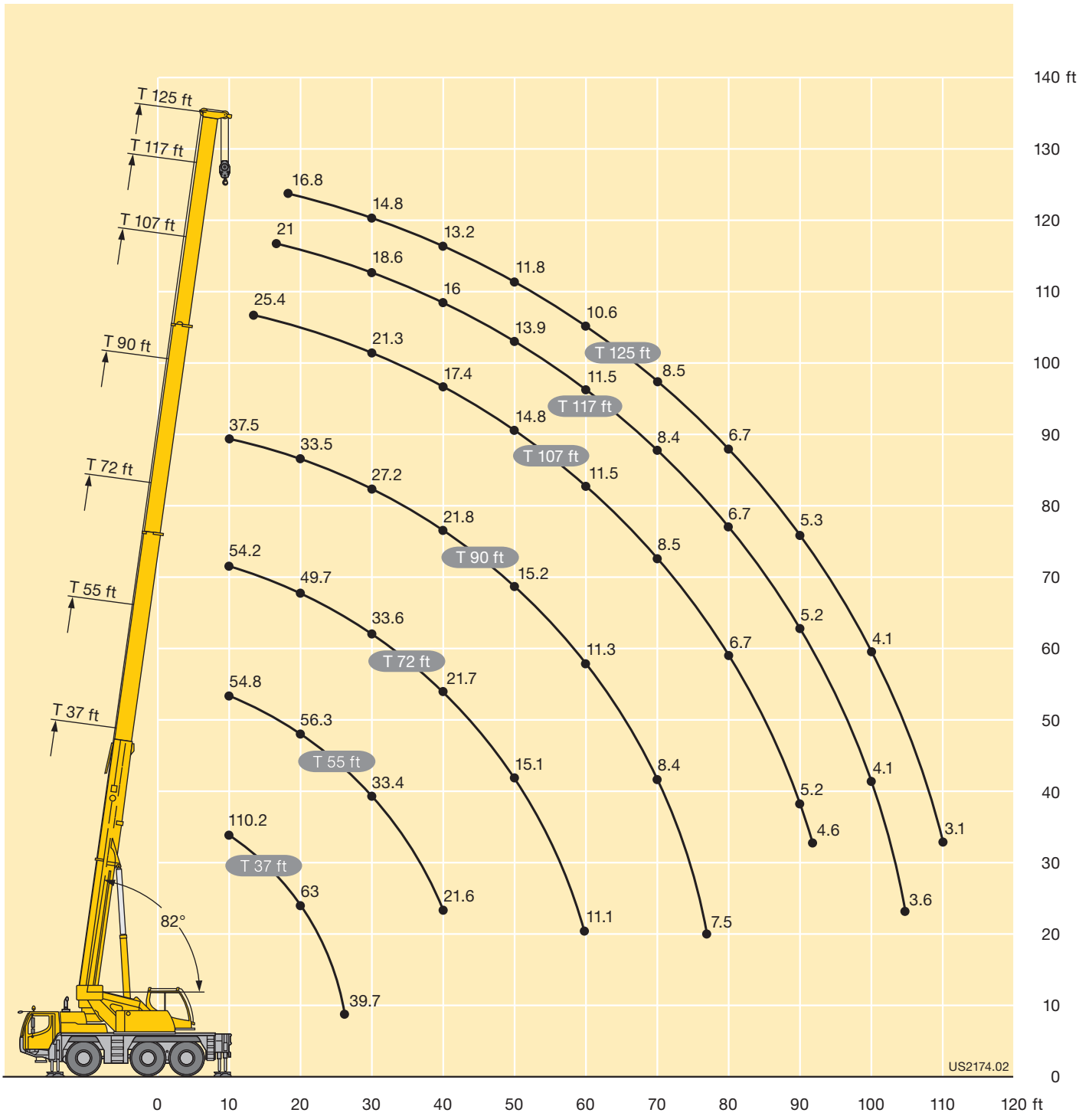
ft	37 ft						55 ft						ft						
	19800 lbs		15400 lbs		12800 lbs		19800 lbs		15400 lbs		12800 lbs								
	0°	360°	0°	360°	0°	360°	0°	**	360°	**	0°	**		360°	**				
10			29.8		28							24.9	24.9		10				
11			27.1		25.4							22.9	22.9		11				
12			24.6		23							21.1	21.1		12				
13			22.2		20.7							19.5	19.5		13				
14	22.8		20		18.6							18	18		14				
15	20.7		18.1		16.9							16.7	16.7		15				
16	18.9		16.5		15.3	12.3						15.5	15.5		16				
17	17.4		15.1		14	11.2	17.8	17.8				14.5	14.5		17				
18	16		13.8		12.8	10.2	16.7	16.7				13.6	13.6		18				
19	14.8		12.7	10.2	11.8	9.3	15.7	15.7				12.6	12.6		19				
20	13.7		11.7	9.3	10.8	8.4	14.6	14.6				11.7	11.7	9.4	9.4	20			
22	11.8		10	7.8	9.2	6.9	12.7	12.7				10.1	10.1	7.9	7.9	22			
24	10.2	8.2	8.5	6.5	7.7	5.7	11.1	11.1				8.7	8.7	6.7	6.7	24			
26	8.9	6.9	7.3	5.4	6.5	4.7	9.8	9.8				7.5	7.5	5.6	5.6	26			
28							8.6	8.6				7.1	7.1	5.4	5.4	4.7	4.7	28	
30							7.6	7.6	5.9	5.9		6.2	6.2	4.6	4.6	3.9	3.9	30	
32							6.7	6.7	5.2	5.2	5.4	5.4	3.9	3.9	4.8	4.8	3.1	3.1	32
34							5.9	5.9	4.5	4.5	4.7	4.7	3.2	3.2	4.1	4.1	2.3	2.3	34
36							5.2	5.2	3.8	3.8	4.1	4.1	2.4	2.4	3.5	3.5	1.7	1.7	36
38							4.6	4.6	3.3	3.3	3.5	3.5	1.9	1.9	3	3			38
40							4	4	2.8	2.8	3	3			2.4	2.4			40

\*\* telescopic loads · capacités de levage en télescopage

t\_185\_03111\_00\_001 / 03211\_00\_001 / 03113\_00\_001 / 03213\_00\_001 / 03116\_00\_001 / 03216\_00\_001

# Lifting heights Hauteurs de levage

T



US2174.02

# Lifting capacities Forces de levage

TK



ft	37 ft				90 ft								107 ft								ft	
	30 ft				30 ft								30 ft									
	0°	20°	40°	60°	0°	**	20°	**	40°	**	60°	**	0°	**	20°	**	40°	**	60°	**		
10	13.5																				10	
11	13.3																					11
12	13.2																					12
13	13.1	11.6			14.2	14.2																13
14	12.9	11.5			14.1	14.1																14
15	12.8	11.3			14.1	14.1																15
16	12.6	11.2			14	14																16
17	12.5	11			14	14							11.7	11.7								17
18	12.3	10.9			13.9	13.9							11.7	11.7								18
19	12.2	10.7			13.9	13.9							11.7	11.7								19
20	12	10.6			13.8	13.8							11.7	11.7								20
22	11.7	10.3	8.7		13.7	13.7							11.6	11.6								22
24	11.4	10.1	8.5		13.5	13.5	11.5	11.5					11.5	11.5								24
26	11.1	9.7	8.4	6.3	13.4	13.4	11.4	11.4					11.5	11.5								26
28	10.8	9.3	8.2	6.2	13.2	13.2	11.2	11.2					11.3	11.3	9.2	9.2						28
30	10.5	8.9	8.1	6.1	13.1	13.1	11	11					11.2	11.2	9.1	9.1						30
32	10.2	8.7	8	6.1	12.9	12.9	10.9	10.9	8.7	8.7			11.1	11.1	9.1	9.1						32
34	10	8.5	7.9	6	12.8	12.8	10.7	10.7	8.6	8.6			11	11	9.1	9.1						34
36	9.7	8.4	7.8	6	12.6	12.6	10.5	10.5	8.5	8.5			10.9	10.9	9	9						36
38	9.4	8.2	7.8	6	12.4	12.4	10.4	10.4	8.4	8.4	6.2	6.2	10.8	10.8	9	9	8.2	8.2				38
40	9	8.1	7.7	6	12.3	12.3	10.2	10.2	8.3	8.3	6.2	6.2	10.6	10.6	8.9	8.9	8.1	8.1				40
45	8.3	7.9	7.7		11.8	11.8	9.9	9.9	8.2	8.2	6.1	6.1	10	10	8.8	8.8	8	8	6.1	6.1		45
50	7.6	7.8			11.4	11.4	9.3	9.3	8	8	6	6	9.8	9.8	8.7	8.7	7.9	7.9	6	6		50
55	7	7.2			10.9	10.9	8.8	8.8	7.9	7.9	6	6	9.6	9.6	8.6	8.6	7.8	7.8	6	6		55
60					10.5	10.5	8.6	8.6	7.8	7.8	6	6	9.2	9.2	8.4	8.4	7.7	7.7	6	6		60
65					10	10	8.4	8.4	7.8	7.8			8.7	8.7	8.2	8.2	7.6	7.6	6	6		65
70					8.8	8.8	8.2	8.2	7.7	7.7			8.2	8.2	7.9	7.9	7.6	7.6	6	6		70
75					7.8	7.8	8	8	7.7	7.7			7.6	7.6	7.6	7.6	7.5	7.5				75
80					7	7	7.4	7.4	7.5	7.5			6.8	6.8	7.2	7.2	7.2	7.2				80
85					6.3	6.3	6.6	6.6	6.8	6.8			6.1	6.1	6.5	6.5	6.7	6.7				85
90					5.6	5.6	5.9	5.9					5.4	5.4	5.8	5.8	6	6				90
95					5	5	5.2	5.2					4.8	4.8	5.1	5.1	5.4	5.4				95
100					4.4	4.4	4.6	4.6					4.2	4.2	4.5	4.5	4.7	4.7				100
105					3.9	3.9							3.7	3.7	4	4						105
110													3.2	3.2	3.4	3.4						110
115													2.8	2.8	3	3						115
120													2.4	2.4								120
125													2.1	1.7								125

\*\* telescopic loads - capacités de levage en télescopage

t\_185\_06111\_00\_001 / 06211\_00\_001 / 06311\_00\_001 / 06411\_00\_001



# Lifting capacities Forces de levage

TK



ft	117 ft								125 ft								ft
	30 ft								30 ft								
	0°	**	20°	**	40°	**	60°	**	0°	**	20°	**	40°	**	60°	**	
20	10.4	10.4															20
22	10.3	10.3							8.6	6.5							22
24	10	10							8.6	6.2							24
26	9.6	9.6							8.6	5.9							26
28	9.5	9.5							8.5	5.7							28
30	9.4	9.3							8.5	5.5							30
32	9.3	9.1	8.1	8.1					8.4	5.3							32
34	9.2	8.9	8	8					8.4	5.1	7.4	4.8					34
36	9.1	8.7	8	8					8.3	4.9	7.4	4.6					36
38	9	8.5	7.9	7.9					8.2	4.7	7.4	4.5					38
40	8.9	8.3	7.9	7.8	7.4	7.4			8.1	4.5	7.3	4.3					40
45	8.8	7.8	7.8	7.4	7.3	7.2	6.1	6.1	7.9	4.1	7.1	3.9	6.7	3.8			45
50	8.6	7.4	7.8	7	7.3	6.8	6	6	7.6	3.7	6.8	3.6	6.4	3.5	6.1	3.3	50
55	8.5	7	7.7	6.7	7.3	6.5	6	6	7.2	3.4	6.5	3.2	6.1	2.9	5.9	2.7	55
60	8.4	6.6	7.7	6.4	7.3	6.2	6	6	6.8	2.8	6.2	2.6	5.8	2.4	5.7	2.3	60
65	8.1	6.3	7.6	6.1	7.3	5.9	6	5.8	6.5	1.9	6	2	5.6	1.9	5.5	1.8	65
70	7.7	6	7.6	5.8	7.3	5.6	6	5.6	6.2		5.7	1.4	5.4	1.3	5.3	1.3	70
75	7.3	5.7	7.3	5.5	7.2	5.4	6	5.3	5.9		5.5		5.2		5.2		75
80	6.7	5.5	6.9	5.3	6.9	5.2			5.7		5.2		5		5		80
85	6	4.5	6.4	4.6	6.6	4.6			5.4		5		4.9				85
90	5.3	3.6	5.7	3.8	6	3.8			5.2		4.9		4.7				90
95	4.7	2.8	5.1	3	5.3	3.1			4.7		4.7		4.6				95
100	4.1	2.2	4.5	2.4	4.7	2.5			4.1		4.5		4.5				100
105	3.6	1.6	3.9	1.9	4.1	2			3.6		4		4.2				105
110	3.1		3.4	1.4					3.1		3.4		3.6				110
115	2.7		2.9						2.7		3						115
120	2.3		2.5						2.3		2.5						120
125	2		2.1						2		2.2						125
130	1.7								1.7		1.8						130
135	1.4								1.4		1.5						135

\*\* telescopic loads · capacités de levage en télescopage

t\_185\_06111\_00\_001 / 06211\_00\_001 / 06311\_00\_001 / 06411\_00\_001

# Lifting capacities Forces de levage

TK



ft	37 ft				90 ft								107 ft								ft	
	52 ft				52 ft								52 ft									
	0°	20°	40°	60°	0°	**	20°	**	40°	**	60°	**	0°	**	20°	**	40°	**	60°	**		
10	5.9																				10	
11	6																					11
12	6.1																					12
13	6.1																					13
14	6.2																					14
15	6.2				6.5	6.5																15
16	6.1				6.5	6.5																16
17	6.1				6.5	6.5																17
18	6				6.5	6.5																18
19	6				6.5	6.5							5.7	5.7								19
20	5.9				6.4	6.4							5.7	5.7								20
22	5.8				6.4	6.4							5.7	5.7								22
24	5.7	5.1			6.3	6.3							5.7	5.7								24
26	5.5	4.9			6.3	6.3							5.7	5.7								26
28	5.4	4.8			6.2	6.2							5.6	5.6								28
30	5.3	4.7			6.1	6.1							5.6	5.6								30
32	5.1	4.6			6.1	6.1							5.5	5.5								32
34	5	4.5			6	6	5.1	5.1					5.5	5.5								34
36	4.9	4.4			6	6	5	5					5.5	5.5								36
38	4.8	4.3	3.8		5.9	5.9	4.9	4.9					5.4	5.4								38
40	4.7	4.2	3.8		5.8	5.8	4.8	4.8					5.4	5.4	4.6	4.6						40
45	4.4	4	3.6		5.6	5.6	4.6	4.6					5.2	5.2	4.5	4.5						45
50	4.2	3.8	3.5	3.2	5.4	5.4	4.5	4.5	3.8	3.8			5.1	5.1	4.4	4.4						50
55	4	3.7	3.4	3.1	5.2	5.2	4.3	4.3	3.7	3.7			5	5	4.2	4.2	3.6	3.6				55
60	3.8	3.5	3.3	3.1	5	5	4.2	4.2	3.6	3.6	3.2	3.2	4.8	4.8	4.1	4.1	3.6	3.6				60
65	3.6	3.4	3.3		4.8	4.8	4.1	4.1	3.5	3.5	3.2	3.2	4.7	4.7	4	4	3.5	3.5	3.2	3.2		65
70	3.5	3.4	3.3		4.7	4.7	3.9	3.9	3.5	3.5	3.1	3.1	4.6	4.6	3.9	3.9	3.5	3.5	3.1	3.1		70
75	3.4	3.4			4.5	4.5	3.8	3.8	3.4	3.4	3.1	3.1	4.4	4.4	3.8	3.8	3.4	3.4	3.1	3.1		75
80					4.3	4.3	3.8	3.8	3.4	3.4	3.1	3.1	4.3	4.3	3.7	3.7	3.4	3.4	3.1	3.1		80
85					4.2	4.2	3.7	3.7	3.3	3.3	3.1	3.1	4.2	4.2	3.7	3.7	3.3	3.3	3.1	3.1		85
90					4	4	3.6	3.6	3.3	3.3			4.1	4.1	3.6	3.6	3.3	3.3	3.1	3.1		90
95					3.9	3.9	3.5	3.5	3.3	3.3			4	4	3.5	3.5	3.3	3.3				95
100					3.8	3.8	3.5	3.5	3.3	3.3			3.9	3.9	3.5	3.5	3.3	3.3				100
105					3.7	3.7	3.4	3.4	3.3	3.3			3.7	3.7	3.4	3.4	3.3	3.3				105
110					3.6	3.6	3.4	3.4	3.3	3.3			3.5	3.5	3.4	3.4	3.3	3.3				110
115					3.4	3.4	3.4	3.4					3.2	3.2	3.3	3.3	3.3	3.3				115
120					3.1	3.1	3.3	3.3					2.8	2.8	3.1	3.1	3.3	3.3				120
125					2.7	2.7	2.9	2.9					2.4	2.4	2.8	2.8						125
130					2.4	2.4							2.1	2.1	2.4	2.4						130
135													1.8	1.8	2.1	2.1						135
140													1.6	1.5	1.7	1.7						140
145													1.3									145

\*\* telescopic loads · capacités de levage en télescopage

t\_185\_06511\_00\_001 / 06611\_00\_001 / 06711\_00\_001 / 06811\_00\_001

# Lifting capacities Forces de levage

TK



ft	117 ft										125 ft						ft
	52 ft																
	0°	**	20°	**	40°	**	60°	**	0°	**	20°	**	40°	**			
22	5.3	5.3													22		
24	5.3	5.3							4.9	4.9					24		
26	5.2	5.2							4.9	4.9					26		
28	5.2	5.2							4.9	4.9					28		
30	5.2	5.2							4.9	4.8					30		
32	5.1	5.1							4.8	4.6					32		
34	5.1	5.1							4.8	4.5					34		
36	5.1	5.1							4.8	4.3					36		
38	5	5							4.8	4.1					38		
40	5	5							4.7	3.9					40		
45	4.9	4.9	4.3	4.3					4.6	3.5	4	3.4			45		
50	4.8	4.8	4.2	4.2					4.5	3.2	4	3			50		
55	4.7	4.7	4.1	4.1					4.5	2.7	4	2.3			55		
60	4.6	4.6	4	4	3.5	3.5			4.4	1.9	3.9	1.7	3.5	1.5	60		
65	4.5	4.5	3.9	3.9	3.5	3.5			4.3		3.8		3.4		65		
70	4.4	4.4	3.8	3.8	3.4	3.4	3.1	3.1	4.3		3.8		3.4		70		
75	4.3	4.3	3.8	3.8	3.4	3.4	3.1	3.1	4.2		3.7		3.3		75		
80	4.2	4.2	3.7	3.7	3.3	3.3	3.1	3.1	4.1		3.6		3.3		80		
85	4.1	4	3.6	3.6	3.3	3.3	3.1	3.1	4		3.6		3.3		85		
90	4	3.2	3.6	3.2	3.3	3	3.1	2.9	3.9		3.5		3.2		90		
95	3.9	2.5	3.5	2.7	3.3	2.6	3.1	2.6	3.8		3.4		3.2		95		
100	3.8	2	3.4	2.2	3.2	2.2			3.6		3.4		3.2		100		
105	3.7	1.5	3.4	1.9	3.2	1.9			3.5		3.3		3.1		105		
110	3.4		3.4	1.5	3.2	1.6			3.3		3.1		3		110		
115	3.1		3.3		3.2	1.3			2.9		3		3		115		
120	2.7		3.1		3.2				2.6		2.9		2.9		120		
125	2.3		2.7		3				2.2		2.6		2.8		125		
130	2		2.4		2.6				1.9		2.3		2.5		130		
135	1.7		2						1.6		2		2.2		135		
140	1.4		1.7						1.3		1.7				140		
145			1.4								1.4				145		

\*\* telescopic loads · capacités de levage en télescopage

t\_185\_06511\_00\_001 / 06611\_00\_001 / 06711\_00\_001 / 06811\_00\_001

# Lifting capacities Forces de levage

TK



ft	37 ft				90 ft								107 ft								ft	
	30 ft				30 ft								30 ft									
	0°	20°	40°	60°	0°	**	20°	**	40°	**	60°	**	0°	**	20°	**	40°	**	60°	**		
10	13.5																				10	
11	13.3																					11
12	13.2																					12
13	13.1	11.6			14.2	14.2																13
14	12.9	11.5			14.1	14.1																14
15	12.8	11.3			14.1	14.1																15
16	12.6	11.2			14	14																16
17	12.5	11			14	14							11.7	11.7								17
18	12.3	10.9			13.9	13.9							11.7	11.7								18
19	12.2	10.7			13.9	13.9							11.7	11.7								19
20	12	10.6			13.8	13.8							11.7	11.7								20
22	11.7	10.3	8.7		13.7	13.7							11.6	11.6								22
24	11.4	10.1	8.5		13.5	13.5	11.5	11.5					11.5	11.5								24
26	11.1	9.7	8.4	6.3	13.4	13.4	11.4	11.4					11.5	11.5								26
28	10.8	9.3	8.2	6.2	13.2	13.2	11.2	11.2					11.3	11.3	9.2	9.2						28
30	10.5	8.9	8.1	6.1	13.1	13.1	11	11					11.2	11.2	9.1	9.1						30
32	10.2	8.7	8	6.1	12.9	12.9	10.9	10.9	8.7	8.7			11.1	11.1	9.1	9.1						32
34	10	8.5	7.9	6	12.8	12.8	10.7	10.7	8.6	8.6			11	11	9.1	9.1						34
36	9.7	8.4	7.8	6	12.6	12.6	10.5	10.5	8.5	8.5			10.9	10.9	9	9						36
38	9.4	8.2	7.8	6	12.4	12.4	10.4	10.4	8.4	8.4	6.2	6.2	10.8	10.8	9	9	8.2	8.2				38
40	9	8.1	7.7	6	12.3	12.3	10.2	10.2	8.3	8.3	6.2	6.2	10.6	10.6	8.9	8.9	8.1	8.1				40
45	8.3	7.9	7.7		11.8	11.8	9.9	9.9	8.2	8.2	6.1	6.1	10	10	8.8	8.8	8	8	6.1	6.1		45
50	7.6	7.8			11.4	11.4	9.3	9.3	8	8	6	6	9.8	9.8	8.7	8.7	7.9	7.9	6	6		50
55	7	7.2			10.9	10.9	8.8	8.8	7.9	7.9	6	6	9.6	9.6	8.6	8.6	7.8	7.8	6	6		55
60					9.8	9.8	8.6	8.6	7.8	7.8	6	6	9.1	9.1	8.4	8.4	7.7	7.7	6	6		60
65					8.5	8.5	8.4	8.4	7.8	7.8			8	8	8.2	8.2	7.6	7.6	6	6		65
70					7.5	7.5	8	8	7.7	7.7			7	7	7.6	7.6	7.6	7.6	6	6		70
75					6.5	6.5	7	7	7.3	7.3			6.1	6.1	6.7	6.7	7.2	7.2				75
80					5.7	5.7	6.1	6.1	6.4	6.4			5.4	5.4	5.9	5.9	6.3	6.3				80
85					4.9	4.9	5.3	5.3	5.5	5.5			4.7	4.7	5.2	5.2	5.5	5.5				85
90					4.3	4.3	4.6	4.6					4.1	4.1	4.5	4.5	4.8	4.8				90
95					3.7	3.7	3.9	3.9					3.5	3.5	3.9	3.9	4.1	4.1				95
100					3.2	3.2	3.4	3.4					3	3	3.3	3.3	3.5	3.5				100
105					2.7	2.7							2.5	2.5	2.8	2.8						105
110													2.1	2.1	2.4	2.4						110
115													1.8	1.8	1.9	1.9						115
120													1.5	1.5								120

\*\* telescopic loads - capacités de levage en télescopage

t\_185\_01116\_00\_001 / 01216\_00\_001 / 01316\_00\_001 / 01416\_00\_001

# Lifting capacities Forces de levage

TK



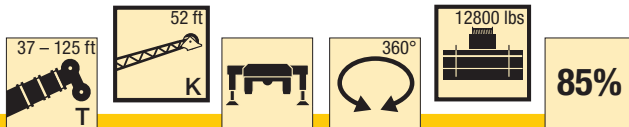
ft	117 ft								125 ft								ft
	30 ft								30 ft								
	0°	**	20°	**	40°	**	60°	**	0°	**	20°	**	40°	**	60°	**	
20	10.4	10.4															20
22	10.3	10.3							8.6	6.5							22
24	10	10							8.6	6.2							24
26	9.6	9.6							8.6	5.9							26
28	9.5	9.5							8.5	5.7							28
30	9.4	9.3							8.5	5.5							30
32	9.3	9.1	8.1	8.1					8.4	5.3							32
34	9.2	8.9	8	8					8.4	5.1	7.4	4.8					34
36	9.1	8.7	8	8					8.3	4.9	7.4	4.6					36
38	9	8.5	7.9	7.9					8.2	4.7	7.4	4.5					38
40	8.9	8.3	7.9	7.8	7.4	7.4			8.1	4.5	7.3	4.3					40
45	8.8	7.8	7.8	7.4	7.3	7.2	6.1	6.1	7.9	4.1	7.1	3.9	6.7	3.8			45
50	8.6	7.4	7.8	7	7.3	6.8	6	6	7.6	3.7	6.8	3.6	6.4	3.5	6.1	3.3	50
55	8.5	7	7.7	6.7	7.3	6.5	6	6	7.2	3.4	6.5	3.2	6.1	2.9	5.9	2.7	55
60	8.4	6.6	7.7	6.4	7.3	6.2	6	6	6.8	2.8	6.2	2.6	5.8	2.4	5.7	2.3	60
65	7.6	6.3	7.6	6.1	7.3	5.9	6	5.8	6.5	1.9	6	2	5.6	1.9	5.5	1.8	65
70	6.7	6	7.4	5.8	7.3	5.6	6	5.6	6.2		5.7	1.4	5.4	1.3	5.3	1.3	70
75	5.8	5.7	6.4	5.5	6.9	5.4	6	5.3	5.7		5.5		5.2		5.2		75
80	5.1	5.1	5.6	5.3	6.1	5.2			5		5.2		5		5		80
85	4.4	4.4	4.9	4.6	5.3	4.6			4.4		4.9		4.9				85
90	3.9	3.6	4.3	3.8	4.7	3.8			3.8		4.3		4.6				90
95	3.4	2.8	3.8	3	4	3.1			3.3		3.7		4.1				95
100	2.9	2.2	3.3	2.4	3.5	2.5			2.9		3.2		3.5				100
105	2.5	1.6	2.8	1.9	3	2			2.4		2.8		3				105
110	2		2.3	1.4					2.1		2.4		2.5				110
115	1.7		1.9						1.7		1.9						115
120	1.4		1.6						1.3		1.6						120
125											1.2						125

\*\* telescopic loads · capacités de levage en télescopage

t\_185\_01116\_00\_001 / 01216\_00\_001 / 01316\_00\_001 / 01416\_00\_001

# Lifting capacities Forces de levage

TK



ft	37 ft				90 ft								107 ft								ft	
	52 ft				52 ft								52 ft									
	0°	20°	40°	60°	0°	**	20°	**	40°	**	60°	**	0°	**	20°	**	40°	**	60°	**		
10	5.9																				10	
11	6																					11
12	6.1																					12
13	6.1																					13
14	6.2																					14
15	6.2				6.5	6.5																15
16	6.1				6.5	6.5																16
17	6.1				6.5	6.5																17
18	6				6.5	6.5																18
19	6				6.5	6.5							5.7	5.7								19
20	5.9				6.4	6.4							5.7	5.7								20
22	5.8				6.4	6.4							5.7	5.7								22
24	5.7	5.1			6.3	6.3							5.7	5.7								24
26	5.5	4.9			6.3	6.3							5.7	5.7								26
28	5.4	4.8			6.2	6.2							5.6	5.6								28
30	5.3	4.7			6.1	6.1							5.6	5.6								30
32	5.1	4.6			6.1	6.1							5.5	5.5								32
34	5	4.5			6	6	5.1	5.1					5.5	5.5								34
36	4.9	4.4			6	6	5	5					5.5	5.5								36
38	4.8	4.3	3.8		5.9	5.9	4.9	4.9					5.4	5.4								38
40	4.7	4.2	3.8		5.8	5.8	4.8	4.8					5.4	5.4	4.6	4.6						40
45	4.4	4	3.6		5.6	5.6	4.6	4.6					5.2	5.2	4.5	4.5						45
50	4.2	3.8	3.5	3.2	5.4	5.4	4.5	4.5	3.8	3.8			5.1	5.1	4.4	4.4						50
55	4	3.7	3.4	3.1	5.2	5.2	4.3	4.3	3.7	3.7			5	5	4.2	4.2	3.6	3.6				55
60	3.8	3.5	3.3	3.1	5	5	4.2	4.2	3.6	3.6	3.2	3.2	4.8	4.8	4.1	4.1	3.6	3.6				60
65	3.6	3.4	3.3		4.8	4.8	4.1	4.1	3.5	3.5	3.2	3.2	4.7	4.7	4	4	3.5	3.5	3.2	3.2		65
70	3.5	3.4	3.3		4.7	4.7	3.9	3.9	3.5	3.5	3.1	3.1	4.6	4.6	3.9	3.9	3.5	3.5	3.1	3.1		70
75	3.4	3.4			4.5	4.5	3.8	3.8	3.4	3.4	3.1	3.1	4.4	4.4	3.8	3.8	3.4	3.4	3.1	3.1		75
80					4.3	4.3	3.8	3.8	3.4	3.4	3.1	3.1	4.3	4.3	3.7	3.7	3.4	3.4	3.1	3.1		80
85					4.2	4.2	3.7	3.7	3.3	3.3	3.1	3.1	4.2	4.2	3.7	3.7	3.3	3.3	3.1	3.1		85
90					4	4	3.6	3.6	3.3	3.3			4.1	4.1	3.6	3.6	3.3	3.3	3.1	3.1		90
95					3.9	3.9	3.5	3.5	3.3	3.3			3.8	3.8	3.5	3.5	3.3	3.3				95
100					3.7	3.7	3.5	3.5	3.3	3.3			3.4	3.4	3.5	3.5	3.3	3.3				100
105					3.2	3.2	3.4	3.4	3.3	3.3			2.9	2.9	3.4	3.4	3.3	3.3				105
110					2.8	2.8	3.2	3.2	3.2	3.2			2.5	2.5	3	3	3.3	3.3				110
115					2.4	2.4	2.7	2.7					2.2	2.2	2.6	2.6	2.9	2.9				115
120					2.1	2.1	2.3	2.3					1.8	1.8	2.2	2.2	2.5	2.5				120
125					1.8	1.8	2	2					1.5	1.5	1.9	1.9						125
130					1.5	1.5									1.5	1.5						130
135															1.2	1.2						135

\*\* telescopic loads - capacités de levage en télescopage

t\_185\_01516\_00\_001 / 01616\_00\_001 / 01716\_00\_001 / 01816\_00\_001

# Lifting capacities Forces de levage

TK

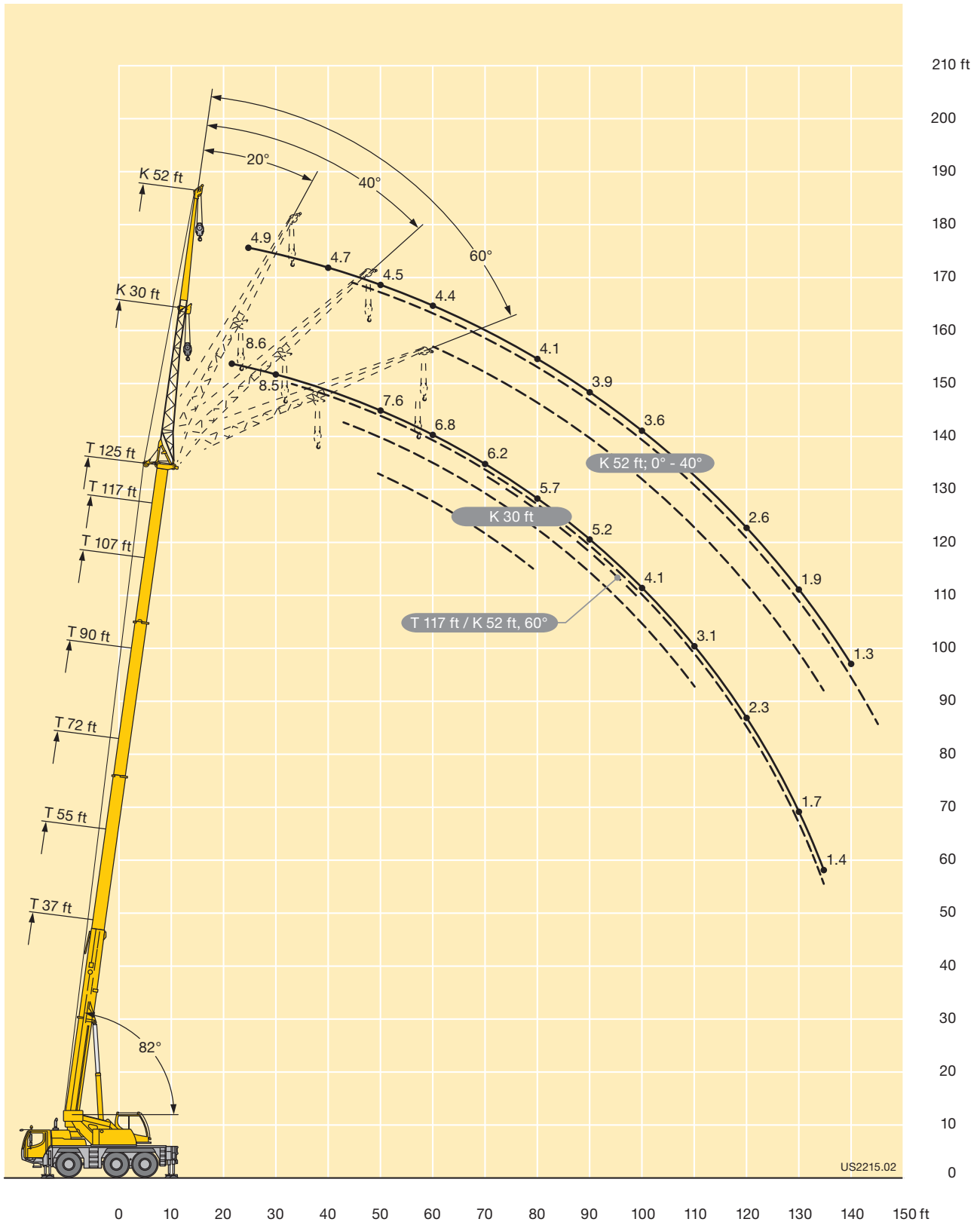


ft	117 ft										125 ft						ft
	52 ft										52 ft						
	0°	**	20°	**	40°	**	60°	**	0°	**	20°	**	40°	**			
22	5.3	5.3													22		
24	5.3	5.3							4.9	4.9					24		
26	5.2	5.2							4.9	4.9					26		
28	5.2	5.2							4.9	4.9					28		
30	5.2	5.2							4.9	4.8					30		
32	5.1	5.1							4.8	4.6					32		
34	5.1	5.1							4.8	4.5					34		
36	5.1	5.1							4.8	4.3					36		
38	5	5							4.8	4.1					38		
40	5	5							4.7	3.9					40		
45	4.9	4.9	4.3	4.3					4.6	3.5	4	3.4			45		
50	4.8	4.8	4.2	4.2					4.5	3.2	4	3			50		
55	4.7	4.7	4.1	4.1					4.5	2.7	4	2.3			55		
60	4.6	4.6	4	4	3.5	3.5			4.4	1.9	3.9	1.7	3.5	1.5	60		
65	4.5	4.5	3.9	3.9	3.5	3.5			4.3		3.8		3.4		65		
70	4.4	4.4	3.8	3.8	3.4	3.4	3.1	3.1	4.3		3.8		3.4		70		
75	4.3	4.3	3.8	3.8	3.4	3.4	3.1	3.1	4.2		3.7		3.3		75		
80	4.2	4.2	3.7	3.7	3.3	3.3	3.1	3.1	4.1		3.6		3.3		80		
85	4.1	4	3.6	3.6	3.3	3.3	3.1	3.1	4		3.6		3.3		85		
90	4	3.2	3.6	3.2	3.3	3	3.1	2.9	3.8		3.5		3.2		90		
95	3.5	2.5	3.5	2.7	3.3	2.6	3.1	2.6	3.4		3.4		3.2		95		
100	3.1	2	3.4	2.2	3.2	2.2			2.9		3.4		3.2		100		
105	2.7	1.5	3.3	1.9	3.2	1.9			2.5		3.1		3.1		105		
110	2.3		2.9	1.5	3.2	1.6			2.2		2.7		3		110		
115	2		2.5		2.9	1.3			1.8		2.3		2.8		115		
120	1.6		2.1		2.4				1.5		2		2.4		120		
125	1.4		1.8		2.1				1.2		1.7		2		125		
130			1.5		1.7						1.4		1.6		130		
135													1.3		135		

\*\* telescopic loads - capacités de levage en télescopage

t\_185\_01516\_00\_001 / 01616\_00\_001 / 01716\_00\_001 / 01816\_00\_001

# Lifting heights Hauteurs de levage





# Lifting capacities Forces de levage

**THK**






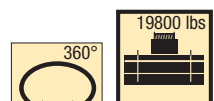
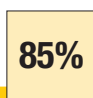




ft	37 ft				55 ft								72 ft								90 ft								ft
	5 ft				5 ft								5 ft								5 ft								
	0°	20°	40°	60°	0°	**	20°	**	40°	**	60°	**	0°	**	20°	**	40°	**	60°	**	0°	**	20°	**	40°	**	60°	**	
24	44.8	45.1	43.4	44.1				45.6	42.9	46	42.2				43.7	39.1	42.7	37.3					29.3	29.3	28.7	28.7	24		
26	40.7	41	40.7	41.5			41.1	41.1	41.4	41.4	41.8	41.2				40.1	39	40.5	37.2					28.1	28.1	27.4	27.4	26	
28	36.3	36.5	36.8	36.9			36.7	36.7	37.1	37.1	37.5	37.5				36.6	36.5	37.1	36.7					27	27	26.3	26.3	28	
30	31.9	33.2	33.3	33.4			33.3	33.3	33.6	33.6	33.8	33.8				33.5	33.5	33.9	33.9					25.9	25.9	25.2	25.2	30	
32			23.7				30.2	30.2	30.7	30.7	30.9	30.9				30.4	30.4	31	31					24.8	24.8	24.3	24.3	32	
34							27.4	27.4	27.8	27.8	28.2	28.2				27.6	27.6	28	28					23.6	23.6	23.3	23.3	34	
36							25.1	25.1	25.4	25.4	25.6	25.6			25.1	25.1	25.4	25.4	25.7	25.7					22.7	22.7	22.5	22.5	36
38					23	23	23.3	23.3	23.5	23.5	23.6	23.6			23.2	23.2	23.5	23.5	23.7	23.7					21.9	21.9	21.7	21.7	38
40					21.3	21.3	21.6	21.6	21.7	21.7	21.9	21.9			21.5	21.5	21.7	21.7	22	22					21	21	21	21	40
45					17.3	17.3	17.4	17.4	17.5	17.5	17.6	17.6			17.6	17.6	17.6	17.6	17.7	17.7			17.4	17.4	17.6	17.6	17.7	17.7	45
50															14.8	14.8	15	15	15.1	15.1			14.8	14.8	15	15	15.1	15.1	50
55													12.6	12.6	12.7	12.7	12.9	12.9	13	13			12.8	12.8	12.9	12.9	13.1	13.1	55
60													10.8	10.8	11	11	11	11	11.1	11.1			11.1	11.1	11.2	11.2	11.3	11.3	60
65													9.2	9.2	9.3	9.3	9.3	9.3	9.3	9.3			9.4	9.4	9.6	9.6	9.4	9.4	65
70																					8	8	8.1	8.1	8.2	8.2	8.3	8.3	70
75																					7.1	7.1	7.2	7.2	7.3	7.3	7.3	7.3	75
80																					6.2	6.2	6.3	6.3	6.3	6.3	6.4	6.4	80
85																													85

\*\* telescopic loads - capacités de levage en télescopage

t\_185\_09111\_00\_001 / 09211\_00\_001 / 09311\_00\_001 / 09411\_00\_001

ft	107 ft								117 ft								125 ft								ft			
	5 ft								5 ft								5 ft											
	0°	**	20°	**	40°	**	60°	**	0°	**	20°	**	40°	**	60°	**	20°	**	40°	**	60°	**						
24					22	20.1	21.9	19.4						17.8	12.7									14.7	6.8		24	
26					21.4	19.6	21.2	18.3					17.9	12.6	17.6	12.4									14.4	6.5		26
28					20.7	18.6	20.4	17.7					17.6	12.3	17.3	12.1			14.2	6.4	14.1	6.3					28	
30					20	17.8	19.7	17.4					17.2	12	16.9	11.8			13.9	6.2	13.8	6.1					30	
32					19.2	17.4	19.1	17.2					16.8	11.7	16.5	11.5			13.5	6	13.5	5.9					32	
34					18.5	17.1	18.4	16.9					16.3	11.4	16	11.2			13.3	5.8	13.1	5.7					34	
36					17.8	16.9	17.7	16.7					15.9	11.1	15.6	11			12.9	5.6	12.8	5.5					36	
38					17.1	16.6	17	16.4					15.4	10.9	15.1	10.7			12.6	5.4	12.5	5.3					38	
40					16.4	16.2	16.4	16.1					14.9	10.6	14.6	10.4			12.3	5.2	12.2	5.1					40	
45					14.8	14.8	14.8	14.8					13.9	10.1	13.7	8.9			11.6	4.8	11.6	4.7					45	
50					13.7	13.7	13.7	13.7					12.9	8.8	12.7	8.2			11	4.4	10.9	4.4					50	
55				12.7	12.7	12.7	12.7	12.7					12.1	8	11.9	7.9			10.4	3.6	10.3	3.6					55	
60				11.1	11.1	11.3	11.3	11.4	11.4				10.9	7.6	11.1	7.6			9.8	2.7	9.8	2.7					60	
65				9.3	9.3	9.7	9.7	9.4	9.4			9.3	7.4	9.5	7.3	9.4	7.3	9.2	1.9	9.3	1.9	9.3	1.9					65
70				8.1	8.1	8.2	8.2	8.3	8.3			8.1	7.1	8.2	7.1	8.3	6.9	8.1		8.2		8.3	1.2					70
75				7.2	7.2	7.3	7.3	7.4	7.4			7.2	6	7.3	5.9	7.4	5.9	7.2		7.3		7.3						75
80				6.3	6.3	6.4	6.4	6.5	6.5			6.4	4.7	6.4	4.7	6.5	4.7	6.4		6.5		6.5						80
85	5.4	5.4	5.5	5.5	5.6	5.6	5.6	5.6	5.6			5.6	3.7	5.6	3.7	5.7	3.8	5.6		5.6		5.6						85
90	4.7	4.7	4.8	4.8	4.8	4.8	4.9	4.9	4.9	4.7	2.8	4.8	2.9	4.9	2.9	5	3	4.8		4.9		5					90	
95	4.1	4.1	4.2	4.2	4.2	4.2	4.2	4.2	4.2	4.1	2.1	4.2	2.2	4.2	2.2	4.3	2.3	4.2		4.3		4.3					95	
100	3.6	3.2	3.6	3.6	3.7	3.7	3.6	3.6	3.6	3.6	1.5	3.6	1.6	3.7	1.6	3.7	1.6	3.6		3.7		3.7					100	
105										3.1		3.1		3.2		3.2		3.1		3.2		3.2					105	
110										2.7		2.7		2.7		2.7		2.7		2.7		2.7					110	
115																		2.3		2.3		2.3					115	

\*\* telescopic loads - capacités de levage en télescopage

t\_185\_09111\_00\_001 / 09211\_00\_001 / 09311\_00\_001 / 09411\_00\_001

# Lifting capacities Forces de levage

**THK**








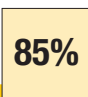
ft	37 ft				55 ft								72 ft								90 ft								ft
	5 ft				5 ft								5 ft								5 ft								
	0°	20°	40°	60°	0°	**	20°	**	40°	**	60°	**	0°	**	20°	**	40°	**	60°	**	0°	**	20°	**	40°	**	60°	**	
24	41.6	42	42.2	42.6				42.2	42.2	42.8	41.6				38.8	38.8	39.4	37					29.3	29.3	28.7	28.7	24		
26	36.6	36.9	37.2	37.6			37.1	37.1	37.5	37.5	38.1	38.1				34.7	34.7	35.3	35.3					28.1	28.1	27.4	27.4	26	
28	32.9	33.2	33.4	33.6			33.3	33.3	33.7	33.7	34	34				31.4	31.4	31.8	31.8					27	27	26.3	26.3	28	
30	29.7	29.7	29.9	30.1			29.7	29.7	30.4	30.4	30.6	30.6				28.5	28.5	28.8	28.8					25.9	25.9	25.2	25.2	30	
32			23.7				26.9	26.9	27	27	27.3	27.3				26	26	26.3	26.3					24.4	24.4	24.3	24.3	32	
34							24.4	24.4	24.7	24.7	24.9	24.9				23.8	23.8	24.2	24.2					22.5	22.5	22.7	22.7	34	
36							22.1	22.1	22.4	22.4	22.5	22.5			21.6	21.6	21.9	21.9	22.3	22.3					20.8	20.8	21	21	36
38					19.8	19.8	20.1	20.1	20.3	20.3	20.5	20.5			20	20	20.2	20.2	20.6	20.6					19.2	19.2	19.5	19.5	38
40					18.1	18.1	18.4	18.4	18.5	18.5	18.7	18.7			18.4	18.4	18.6	18.6	18.9	18.9					17.8	17.8	18.1	18.1	40
45					14.7	14.7	14.9	14.9	15	15	15.1	15.1			15.1	15.1	15.3	15.3	15.4	15.4			14.8	14.8	15	15	15.2	15.2	45
50															12.5	12.5	12.7	12.7	12.8	12.8			12.5	12.5	12.7	12.7	12.9	12.9	50
55													10.3	10.3	10.5	10.5	10.6	10.6	10.7	10.7			10.6	10.6	10.8	10.8	10.9	10.9	55
60													8.8	8.8	8.9	8.9	9	9	9.1	9.1			9	9	9.1	9.1	9.2	9.2	60
65													7.5	7.5	7.6	7.6	7.7	7.7	7.7	7.7			7.7	7.7	7.8	7.8	7.9	7.9	65
70																					6.4	6.4	6.5	6.5	6.6	6.6	6.7	6.7	70
75																					5.4	5.4	5.6	5.6	5.6	5.6	5.7	5.7	75
80																					4.7	4.7	4.7	4.7	4.8	4.8	4.8	4.8	80

\*\* telescopic loads · capacités de levage en télescopage

t\_185\_04116\_00\_001 / 04216\_00\_001 / 04316\_00\_001 / 04416\_00\_001



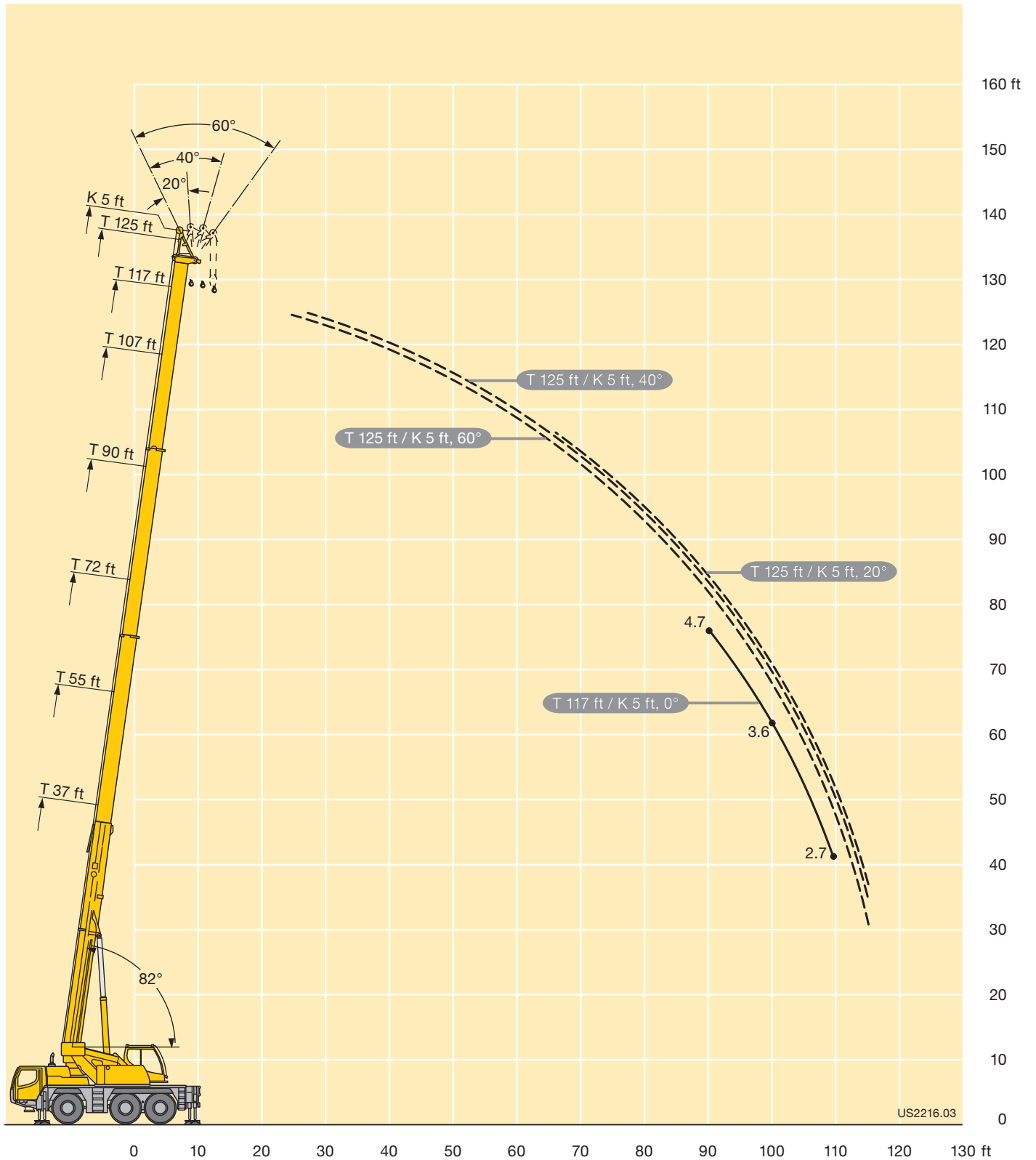




ft	107 ft								117 ft								125 ft								ft	
	5 ft								5 ft								5 ft									
	0°	**	20°	**	40°	**	60°	**	0°	**	20°	**	40°	**	60°	**	20°	**	40°	**	60°	**				
24					22	20.1	21.9	19.4						17.8	12.7					14.7	6.8	24				
26					21.4	19.6	21.2	18.3					17.9	12.6	17.6	12.4					14.4	6.5	26			
28					20.7	18.6	20.4	17.7					17.6	12.3	17.3	12.1			14.2	6.4	14.1	6.3	28			
30					20	17.8	19.7	17.4					17.2	12	16.9	11.8			13.9	6.2	13.8	6.1	30			
32					19.2	17.4	19.1	17.2					16.8	11.7	16.5	11.5			13.5	6	13.5	5.9	32			
34					18.5	17.1	18.4	16.9					16.3	11.4	16	11.2			13.3	5.8	13.1	5.7	34			
36					17.8	16.9	17.7	16.7					15.9	11.1	15.6	11			12.9	5.6	12.8	5.5	36			
38					17.1	16.6	17	16.4					15.4	10.9	15.1	10.7			12.6	5.4	12.5	5.3	38			
40					16.4	16.2	16.4	16.1					14.9	10.6	14.6	10.4			12.3	5.2	12.2	5.1	40			
45					14.3	14.3	14.5	14.5					13.7	10.1	13.6	8.9			11.6	4.8	11.6	4.7	45			
50					12.2	12.2	12.4	12.4					11.8	8.8	12.1	8.2			11	4.4	10.9	4.4	50			
55						10.3	10.3	10.4	10.4	10.6	10.6			10.2	8	10.4	7.9			10	3.6	10.2	3.6	55		
60						8.8	8.8	9	9	9.1	9.1			8.7	7.6	9	7.6			8.7	2.7	8.8	2.7	60		
65						7.7	7.7	7.8	7.8	7.9	7.9			7.5	7.4	7.6	7.3	7.8	7.3	7.4	1.9	7.5	1.9	7.6	1.9	65
70						6.6	6.6	6.7	6.7	6.8	6.8			6.5	6.5	6.6	6.6	6.7	6.7	6.4		6.5		6.6	1.2	70
75						5.6	5.6	5.7	5.7	5.8	5.8			5.6	5.6	5.7	5.7	5.8	5.8	5.5		5.7		5.7		75
80						4.8	4.8	4.9	4.9	4.9	4.9			4.9	4.7	4.9	4.7	5	4.7	4.8		4.9		5		80
85						4.1	4.1	4.1	4.1	4.2	4.2			4.1	3.7	4.2	3.7	4.3	3.8	4.1		4.2		4.3		85
90	3.4	3.4			3.4	3.4	3.5	3.5	3.5	3.5	3.5	3.4	2.8	3.5	2.9	3.5	2.9	3.6	3	3.5		3.6		3.6		90
95	2.8	2.8			2.9	2.9	2.9	2.9	3	3	3	2.8	2.1	2.9	2.2	2.9	2.2	3	2.3	2.9		3		3.1		95
100	2.4	2.4			2.4	2.4	2.5	2.5	2.5	2.5	2.5	2.4	1.5	2.4	1.6	2.5	1.6	2.5	1.6	2.4		2.5		2.6		100
105												1.9		2		2		2.1		2		2.1		2.1		105
110												1.6		1.6		1.6		1.6		1.6		1.7		1.7		110
115																				1.3		1.3		1.3		115

\*\* telescopic loads · capacités de levage en télescopage

t\_185\_04116\_00\_001 / 04216\_00\_001 / 04316\_00\_001 / 04416\_00\_001



## Equipment Equipment

### Crane carrier

<b>Frame</b>	Liebherr designed and manufactured, box-type, torsion resistant design of high-tensile fine grained structural steel.
<b>Outriggers</b>	4-point supporting system, hydraulically telescopic into horizontal and vertical direction. Operation with remote control, automatic support leveling, electronic inclination display.
<b>Engine</b>	6-cylinder Diesel engine, make Liebherr, watercooled, 270 kW (367 h.p.), max. torque 1268 lbs-ft. Exhaust emissions acc. to 97/68/EG and EPA/CARB. Electronic engine management. Fuel tank: 92 gallons.
<b>Transmission</b>	ZF 12-speed gear box with automatic control system AS-TRONIC.
<b>Axles</b>	All axles steered. Axles 2 and 3 with planetary gears and differential locks.
<b>Suspension</b>	All axles with hydropneumatic suspension and hydraulic locking facility.
<b>Tyres</b>	6 tyres. Tyre size: 445/95 R 25 (16.00 R 25).
<b>Steering</b>	2-circuit system with hydraulic servo steering and auxiliary pump circuit. Active speed depending rear axle steering, special steering programs for various driving situations.
<b>Brakes</b>	Service brake: all-wheel servo-air brake, all axles are equipped with disc brakes, dual circuit. Hand brake: Spring-loaded, acting on all wheels of axles 1 and 3. Sustained-action brake: Exhaust retarder with additional Liebherr braking system. Anti-lock device in conjunction with anti-skid control.
<b>Driver's cab</b>	Two-men driving cab, steel sheet design, cataphoretic dip-primed, mounted on rubber shock absorbers and on hydraulic dampers, safety glass windows.
<b>Electrical system</b>	Modern data bus technique, 24 Volt DC, 2 batteries of 170 Ah each.

### Crane superstructure

<b>Frame</b>	Liebherr-made, torsion-resistant, welded construction of high-tensile structural steel, single-row ball bearing slewing ring.
<b>Crane drive</b>	Diesel-hydraulic with 1 axial variable displacement pump with automatic capacity control, 1 double gear pump, driven by the carrier Diesel engine, open regulated oil circuits with electrically controlled „load sensing“, operation of 4 movements simultaneously.
<b>Crane control</b>	Electrical control of drives by self-centering joysticks, armrest-integrated control elements, Liebherr system bus (LSB).
<b>Hoist gear</b>	Axial piston fixed displacement motor, hoist drum with integrated planetary gear and spring-loaded static brake, actuation by open regulated oil circuit.
<b>Luffing gear</b>	1 differential ram with pilot operated brake valve.
<b>Slewing gear</b>	Axial piston fixed displacement motor, planetary gear, spring-loaded static brake.
<b>Crane cab</b>	Corrosion resistant, large field of vision, safety glazing.
<b>Safety devices</b>	LICCON2 safe load indicator, hoist limit switch, safety valves against pipe and hose rupture, test system for servicing.
<b>Telescopic boom</b>	1 base section and 3 telescopic sections. The telescopes are extended by a three-stage hydromechanic telescoping system with double pulley block. Boom telescopic under partial load. Boom length: 37 ft – 125 ft.
<b>Counterweight</b>	15400 lbs
<b>Electrical system</b>	Modern data bus technique, 24 Volt DC.

### Additional equipment

<b>Folding jib</b>	Single folding jib, 30 ft long, installation at 0°, 20°, 40° or 60°. Double folding jib, 30 ft – 52 ft long, installation at 0°, 20°, 40° or 60°.
<b>Erection jib</b>	Consisting of the adapter of the swing-away jib and an additional pulley set, 5 ft long, mountable at 0°, 20°, 40° and 60°.
<b>Tyres</b>	6 tyres. Tyre size: 525/80 R 25 (20.5 R 25).
<b>Drive 6 x 6</b>	Axle 1 additionally driven.
<b>Additional counterweight</b>	4400 lbs for a total counterweight of 19800 lbs.

Other items of equipment available on request.

## Châssis porteur

<b>Châssis</b>	Fabrication Liebherr, construction en caisson indéformable, en acier à haute résistance à grains fins.
<b>Stabilisateurs</b>	Dispositif de calage horizontal et vertical en 4 points, entièrement déployable hydrauliquement. Utilisation avec commande à distance, mise à niveau automatique du calage, inclinomètre électronique.
<b>Moteur</b>	Diesel, 6 cylindres, marque Liebherr, refroidi par eau, puissance 270 kW (367 ch), couple max. 1268 lbs-ft. Emissions des gaz d'échappement conformes aux directives 97/68/EG et EPA/CARB. Gestion électronique. Réservoir à carburant: 92 gallons.
<b>Boîte de vitesse</b>	Boîte de vitesses ZF à 12 rapports, mécanisme automatisé à commande AS-TRONIC.
<b>Essieux</b>	Tous les essieux sont directeurs. Les essieux 2 et 3 avec planétaires et blockages de différentiels.
<b>Suspension</b>	Tous les essieux sont suspendus hydropneumatiquement et blocable hydrauliquement.
<b>Pneumatiques</b>	6 roues. Taille: 445/95 R 25 (16.00 R 25).
<b>Direction</b>	2 circuits avec direction assistée hydraulique avec pompe auxiliaire entraînée par essieu. Direction active des essieux arrière et dépendante de la vitesse, programmes de direction spéciaux pour les différents modes de déplacement.
<b>Freins</b>	Freins de service: servofrein à air comprimé, tous les essieux sont munis de freins à disque, à 2 circuits. Frein à main: par cylindres à ressorts, agissant sur les roues des essieux 1 et 3. Frein à régime continu: Ralentisseur sur échappement avec système de freinage additionnel Liebherr. Dispositif anti-enrayeur avec contrôle anti-patinage.
<b>Cabine</b>	Cabine conducteur bi-place en tôle d'acier revêtue anti-corrosion par bain de cathorèse, suspendue sur silent blocs et amortissement hydraulique vitrage de sécurité, tableau de bord complet.
<b>Installation électrique</b>	Technique moderne de transmission de données par BUS de données, courant continu 24 Volts, 2 batteries de 170 Ah chacune.

## Partie tournante

<b>Châssis</b>	Fabrication Liebherr, construction mécanosoudée en tôle d'acier à haute résistance à grains fins. Couronne d'orientation à 1 rangée de billes.
----------------	--

<b>Entraînement</b>	Diesel hydraulique avec 1 pompe double à débit variable et régulation de puissance automatique, 1 pompe à engrenages double, entraînés par le moteur Diesel du porteur, circuits hydrauliques ouverts avec „load sensing“, régulé électriquement. 4 mouvements simultanés praticables.
<b>Commande</b>	Commande électrique des mécanismes par leviers de manoeuvre à centrage automatique, commandes de grue „grand confort“ intégrées aux accoudoirs du siège, Liebherr système bus.
<b>Treuil</b>	Moteur hydraulique à cylindrée constante, treuil à réducteur planétaire incorporé et frein d'arrêt à ressort, en circuit hydraulique ouvert ou fermé et régulé.
<b>Relevage de flèche</b>	1 vérin différentiel à soupape pilotage de freinage.
<b>Orientation</b>	Moteur à cylindrée constante à pistons axiaux, engrenage planétaire, frein d'arrêt commandé par ressort.
<b>Cabine de grue</b>	Résistante à la corrosion, visibilité panoramique, avec vitrage de sécurité.
<b>Sécurité</b>	Contrôleur de charge LICCON2, fin de course crochet haut, clapets de sécurité en cas de ruptures de flexibles. Système de test pour faciliter l'entretien.
<b>Flèche télescopique</b>	1 élément de base et 3 éléments télescopiques. Les éléments télescopiques sont sortis via une poulie moufle à 2 brins grâce à un système de télescopage hydromécanique à 3 positions. Flèche télescopable sous contrepoids partiel. Longueur de flèche: 37 ft – 125 ft.
<b>Contrepoids</b>	15400 lbs
<b>Circuit électrique</b>	Technique moderne de transmission de données par BUS de données, courant continu 24 Volts.

## Équipement supplémentaire

<b>Fléchette pliante</b>	Fléchette pliante simple, longueur 30 ft, montable à 0°, 20°, 40° ou 60°. Fléchette pliante double, longueur 30 ft – 52 ft, montable à 0°, 20°, 40° ou 60°.
<b>Fléchette de montage</b>	Se compose de l'adaptateur de la fléchette pliante et d'un jeu de poulies supplémentaire, présente une longueur de 5 ft, peut être montée sous 0°, 20°, 40° et 60°.
<b>Pneumatiques</b>	6 roues. Taille: 525/80 R 25 (20.5 R 25).
<b>Entraînement 6 x 6</b>	Essieu 1 est entraîné additionnellement.
<b>Contrepoids supplémentaire</b>	4400 lbs pour un contrepoids total de 19800 lbs.



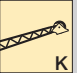
Autres équipements supplémentaires sur demande.

## Description of symbols Explication des symboles

### General symbols Symboles généraux

	Outriggers Calage		Driving speed Vitesse de translation
	Outriggers – free on tyres Calage – libre sur pneus		Driving speed – Crawl speed Vitesse de translation – Marche lente
	Axle Essieu		Gear Vitesse
	Radius Portée		Hookblock / Capacity Moufle à crochet / Capacité de charge
	Boom length Longueur de la flèche		Hoist gear Treuil de levage
	Boom position Position de la flèche		Crane carrier Châssis porteur
	Counterweight Contrepoids		Crane superstructure Partie tournante de la grue
	Tyres Pneumatiques		Standard Norme
	Slewing gear / Working area Mécanisme d'orientation / Plage de travail		Gradability Aptitude à gravir les pentes

### Crane specific symbols Symboles spécifiques à la grue

	Telescopic boom Flèche télescopique		Erection jib Fléchette de montage
	Swing away jib Fléchette pliante		

## Remarks referring to load charts

1. The lifting capacities do not exceed 85 % of the tipping load according to ASME B 30.5.  
The crane's structural steelwork is in accordance with EN 13000 and ASME B 30.5.
2. For the calculation of the load charts at least a wind speed of 23 ft/s (7 m/s, 15.7 mph) and regarding the load a sail area of 1 m<sup>2</sup> per ton load and a wind resistance coefficient of 1.2 on the load have been taken into account. For lifting of loads with large sail areas and/or high wind resistance coefficients the maximum wind speed as stated in the load charts has to be reduced.
3. Lifting capacities are given in kips.
4. The weight of the hook blocks and hooks must be deducted from the lifting capacities.
5. Working radii are measured from the slewing centreline.
6. The lifting capacities given for the telescopic boom only apply if the folding jib is taken off.
7. Lifting capacities above 92.6 kips only with additional pulley block.
8. The data of this brochure serves only for general information. All information is provided without warranty. Instructions for the correct commissioning of the crane please take from the operation manual and the load chart book.

## Remarques relatives aux tableaux des charges

1. La capacité de charge ne doit pas dépasser 85 % de la charge de basculement conformément à ASME B 30.5.  
La structure métallique de la grue est conforme à EN 13000 et ASME B 30.5.
2. Une vitesse de vent de 23 ft/s (7 m/s, 15.7 mph) minimum, une surface de prise au vent de 1 m<sup>2</sup> par tonne ainsi qu'un coefficient de résistance au vent de la charge 1,2 sont pris en compte pour le calcul des tableaux de charge. Lorsque des charges ayant une surface de prise au vent et/ou un coefficient de résistance au vent plus élevé(e)s sont levées, la vitesse de vent maximale indiquée dans les tableaux de charge doit être réduite.
3. Les forces de levage sont données en kips.
4. Les poids des moufles et crochets doit être soustrait des charges indiquées.
5. Les portées sont calculées à partir de l'axe de rotation.
6. Les forces indiquées pour la flèche télescopique s'entendent fléchette déployable déposée.
7. Les charges supérieures à 92.6 kips seulement avec moufle additionnel.
8. Les données de cette brochure sont données à titre informatif. Ces renseignements sont sans garantie. Les consignes relatives à la bonne mise en service de la grue sont disponibles dans le manuel d'utilisation et le manuel de tableaux de charge.

**Liebherr-Werk Ehingen GmbH**

Postfach 1361, 89582 Ehingen, Germany

☎ +49 73 91 5 02-0, Fax +49 73 91 5 02-33 99

[www.liebherr.com](http://www.liebherr.com), E-mail: [info.lwe@liebherr.com](mailto:info.lwe@liebherr.com)

[www.facebook.com/LiebherrConstruction](https://www.facebook.com/LiebherrConstruction)